



Godshill Primary School

# NEWSLETTER



Friday 23rd January 2026 Issue 17



Dear Parents/Carers,

Today the children have presented to their peers why they should be elected to our school council. Each class has then voted to choose their representative.

The new School Councilors are as follows:

Reception - Jude C & Anna B  
Year 1 - Reuben B & Everly H  
Year 2 - Eric J & Olivia H  
Year 3 - Callie H & Angus S  
Year 4 - Vinnie B & Annabelle W  
Year 5 - Pippa N, Lizzie P & Kenny H  
Year 6 - Owen SB, Alden V & Meadow WM

In Monday's Celebration Assembly these children will be presented to the rest of the school and receive their school council badge.

One of their first jobs will be to consult on updating our uniform. Many of you will be aware that the government is trying to ensure that uniforms are practical and affordable for families, so we will be launching a consultation into potentially changing the uniform.

There will be more information shared in the coming weeks, as we seek yours and the children's views about it, and to ensure that if any changes are made, it is done in a timely manner to support you all.

Can I thank all the children for their resilience and patience over the last couple of weeks. We have had so many wet breaks and lunchtimes and the children have coped really well with not always being able to get outside!

We have also had some staff absence through illness and we have had to cover classes, and the children have been really good in coping with these changes.

They are a fantastic group of children.

Mark Snow



Telephone: 01983 840246 Email: [office@godshillprimary.co.uk](mailto:office@godshillprimary.co.uk) Website: [www.godshillprimaryschool.co.uk](http://www.godshillprimaryschool.co.uk)

[facebook.com/godshillprimary.co.uk/](https://facebook.com/godshillprimary.co.uk/)

[instagram.com/godshillprimary/](https://instagram.com/godshillprimary/)





Godshill Primary School

# NEWSLETTER



Friday 23rd January 2026 Issue 17



## DATES FOR YOUR DIARY 2025/2026

### Spring Term 2026

5th January - 27th March 2026

Half-term 16th February -20th February 2026

### Summer Term 2026

13th April—27th July 2026

Half-term 25th May—29th May 2026

### DEVELOPMENT DAYS

The school will be closed for a Development day on the following dates:

22nd June 2026

27th July 2026

### TRIPS & OTHER INFORMATION

9th February 2026 - Isle Dance

24th February 2026 - Young Voices

25th - 27th March 2026 - Year 5 Osmington Bay

### Long hair in school

Please ensure that if your child has long hair, it is tied up for school every day. This applies to both girls and boys.

### Parking Around the School

We are asking that you be considerate and mindful of our neighbours, who surround our school, and parking at drop off, and pick up.

### Jewellery

Earrings are not to be worn for PE, they need to be removed, either by the child at school, or at home in the morning. Stud earrings only are permitted to be worn in school. If for whatever reason the earrings cannot be removed then they must be covered with tape for PE lessons, which must be provided from home.

### Coats in school

With the weather still so changeable at the moment, please ensure that your child brings a coat, named, into school every day.

### School Uniform

In the main reception area, there is a second hand uniform rail.

Mrs Groves has more items that cannot be displayed. If you are in need of certain items then please let us know, we will do our very best to try and accommodate you.

### Contact Details

If you move house or update any contact details (phone numbers/emails) please remember to let us know via email to the office, to ensure that our records are correct.



Telephone: 01983 840246

Email: [office@godshillprimary.co.uk](mailto:office@godshillprimary.co.uk)

Website: [www.godshillprimaryschool.co.uk](http://www.godshillprimaryschool.co.uk)

[facebook.com/godshillprimary.co.uk/](https://facebook.com/godshillprimary.co.uk/)

[instagram.com/godshillprimary/](https://instagram.com/godshillprimary/)



PROUD TO BE A  
MUSIC MARK  
SCHOOL  
2024 - 2025



## Nursery

This week in Preschool we have continued looking at the story of the Little Red Riding Hood. The children have been acting out the story and making brussel sprout soup.



## Reception & Year 1

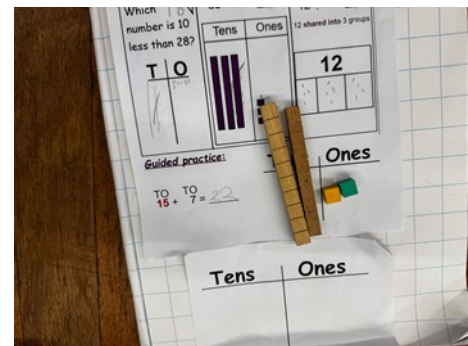
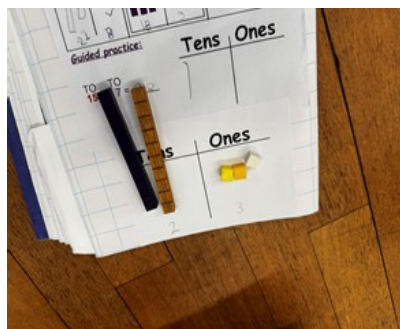
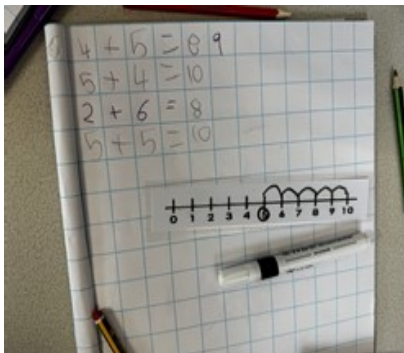
This week in Forelands class, we have shared the story of Yeti and the Bird. We have explored the difference between snowy mountains and a tropical island.

The children have been learning how to paint using horizontal strokes and have explored mixing colours and seeing how they blend.

The children have also been exploring length with Reception organising by size order and Year 1 measuring in units to compare them.

## Year 1 & 2

This week the children have loved diving into their Maths lessons where they have looked at how to apply different addition strategies to solve problems with greater independence. We have used tens frames, number lines and dienes to help us physically solve a wide range of challenges.

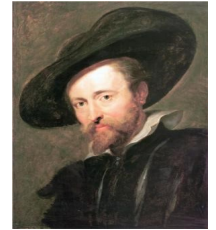




## Year 3

In Art, Year 3 has started to look at the work of Peter Paul Rubens, focusing on composition, movement and gesture.

The children have had a go at dividing the human shape into circles for joints and ovals for limbs in order to portray different poses and gestures.



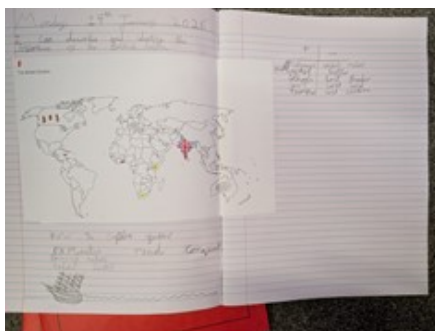
## Year 4

This week, Year 4 started their new learning journey in English. We went under the desk and into our very own Narnia, where children were able to focus on the sensory experience of visiting another world. We used this experience to generate descriptive vocabulary which will later be used to write a setting description of Narnia.



## Year 5

Year 5 have made a great start to their new topics this term. In History, they are learning about the British Empire and some of the countries that were part of it. In English, they have begun exploring online news articles, identifying key features to support them in writing their own.





# NEWSLETTER



Friday 23rd January 2026 Issue 17

## Year 6

This week we have been focusing on our Happy Mind activities and our PSHE topic—its ok to be different. This has led to some very mature questions and discussions. In Art we have finished our atmospheric mixed media seascape.



### Stars of the week

	<b>Stars of the week</b>	
Ashton P	For his amazing tidying skills.	
Mia S	For being kind and using her manners, which her friends have shared how amazing she has been with this.	
Everly H	For fantastic attitude towards learning in all subjects. She has shown a desire to improve and succeed.	
Lilah B	For fantastic progress in all areas of Maths, which has reflected in her making superb and confident contributions during retrieval activities at the start of each Maths lesson.	
Arthur S	Arthur has a curious and enquiring mind, which means that he always has an interesting and thoughtful contribution to make to a class discussion. His recall of facts is very impressive.	
Roseanne M	Roseanne has been impressing us all with the extra work she has been doing at home. This shows her incredible commitment towards her learning.	
Kenny H	For putting himself out there and having a go. He showed great confidence and a positive attitude by trying new challenges and giving his best effort. Well Done!	
Rosie D	For a fabulous achievement in Maths , persevering to overcome challenges.	

### Sports Stars of the Week:

Both the U11 girls and U11 teams : Olivia H, Lily ML, Lacey D, Michelle P, Pippa N, Maddison F, Lottie S, Luca MP, Jabril A, Bronek FW, Leo B, Jasper R, Andreas Z & Mohammed A.





Godshill Primary School

# NEWSLETTER



Friday 23rd January 2026 Issue 17

Both the U11 girls and U11 teams are back to football with a bang as 2026 begins. A double header against Niton produced two tough and exciting games. The U11 girls managed to come from 0-1 down to win 2-1. The U11 team lead from the start and managed to win 5-1. Well done to both teams! Two fantastic team performances!



Telephone: 01983 840246 Email: [office@godshillprimary.co.uk](mailto:office@godshillprimary.co.uk) Website: [www.godshillprimaryschool.co.uk](http://www.godshillprimaryschool.co.uk)

[facebook.com/godshillprimary.co.uk/](https://facebook.com/godshillprimary.co.uk/)

[instagram.com/godshillprimary/](https://instagram.com/godshillprimary/)





## Nut Allergies

Please can we remind you that we are a **nut** aware school, as we have children with serious nut allergies & ask that you do **not** send your child in with any foods containing nuts, for example—Peanut Butter, Nutella, Nutty Cereal Bars, Bakewell tart etc.

We thank you for your co-operation & support.

## PE Days

Please send your child into school wearing the correct school PE kit on the following days (unless specifically mentioned otherwise):

Year R	Monday & Tuesday
Year 1 & 2	Monday & Wednesday
Year 3	Monday & Tuesday
Year 4	Monday & Tuesday
Year 5	Monday & Tuesday
Year 6	Tuesday & Wednesday

## Good news from the inclusion team...

Recently the Supporting Families Team have launched a new website

### [IW Family Information Hub \(iow.gov.uk\)](http://iow.gov.uk)

This website will help keep you up to date with the information, support and advice available in your area.

There are lists of organisations, services and activities available to you, that you can access either in person or online.

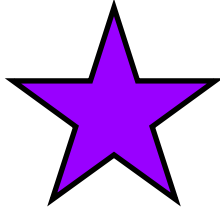
These include: **Early years and childcare**, **Support for families**, **Housing and finance**, **Learning and employment**, **Health and wellbeing**, **Young people**, **Leisure and much more...**



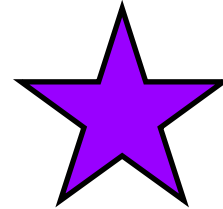


# NEWSLETTER

Friday 23rd January 2026 Issue 17



Year group	Attendance %
R/1	96.88
1/2	97.59
3	92.86
4	89.26
5	91.20
6	85.71
Whole school	91.92
Whole school target	96.00



## Why high attendance is important for education

As a parent/carer you want the best for your children. Having a good education is an important factor in opening up more opportunities in adult life. Did you know that:

- a child who is absent a day of school per week misses an equivalent of two years of their school life
- 90% of young people with absence rates below 85% fail to achieve five or more good grades of GCSE and around one third achieve no GCSEs at all
- poor examination results limit young people's options and poor attendance suggests to colleges and employers that these students are unreliable

All absence at any stage leads to gaps in your child's learning. This in turn can:

- mean that they fall behind in work
- affect their motivation
- affect their enjoyment of learning
- lead to poor behaviour
- affect their ability to have or keep friendships.

## Supporting your child's school attendance

Good school attendance habits are best started early. Children learn from those around them and you as parents/carers set the standards and expectations for your child.

For hints, tips and advice on how you can support your child with their school attendance, check out the website: [www.iow.gov.uk/schoolattendance](http://www.iow.gov.uk/schoolattendance)

