



Godshill Primary School

NEWSLETTER



Friday 24 April 2026 Issue 27

Dear Parents/Carers,

It is very important to please contact the office by email, or a phone call **everyday** if your child is absent.

You must include your child's symptoms and their reason for being absent.
Thank you.

Mr Snow & Mrs Morgan-Huws.

DATES FOR YOUR DIARY 2025/2026

Spring Term 2026

5th January - 27th March 2026

Half-term 16th February -20th February 2026

Summer Term 2026

13th April—27th July 2026

Half-term 25th May—29th May 2026

DEVELOPMENT DAYS

The school will be closed for a Development day on the following dates:

5th June 2026

22nd June 2026

27th July 2026

TRIPS & OTHER INFORMATION.

29th April—Year 3 Naturezones Trip

15th May 2026 - Year 6 End of SATs Celebration

18th May 2026 - Year 6 Trip to UKSA

19th May 2026—Year 3 Royal IW County Show

3rd & 4th June 2026 - Year 6 Trip to London



Telephone: 01983 840246

Email: office@godshillprimary.co.uk

Website: www.godshillprimaryschool.co.uk

facebook.com/godshillprimary.co.uk/

instagram.com/godshillprimary/



PROUD TO BE A
MUSIC MARK
SCHOOL
2024 - 2025



Godshill Primary School

NEWSLETTER



Friday 24 April 2026 Issue 27

Long hair in school

Please ensure that if your child has long hair, it is tied up for school every day. This applies to both girls and boys.

Parking Around the School

We are asking that you be considerate and mindful of our neighbours, who surround our school and parking at drop off, and pick up.

Jewellery

Earrings are not to be worn for PE, they need to be removed, either by the child at school, or at home in the morning. Stud earrings only are permitted to be worn in school. If for whatever reason the earrings cannot be removed then they must be covered with tape for PE lessons, which must be provided from home.

Coats in school

With the weather still so changeable at the moment, please ensure that your child brings a coat, named, into school every day.

School Uniform

In the main reception area, there is a second hand uniform rail now with summer dresses and shorts (hopefully the weather is now getting warmer!)

Mrs Groves has more items that cannot be displayed. If you are in need of certain items then please let us know, we will do our very best to try and accommodate you.

Contact Details

If you move house or update any contact details (phone numbers/emails) please remember to let us know via email to the office, to ensure that our records are correct.

Godshill Griffins Childcare

This week our babies have continued to settle in their new environment and we have loved watching them making bonds with both staff and the other children.

In our preschool room we have been exploring our new indoor sand tray which has been big hit with the children since moving the boat sand pit into our garden area. We have also been developing our gross motor skills by climbing and jumping off the large shaped apparatus.



Telephone: 01983 840246

Email: office@godshillprimary.co.uk

Website: www.godshillprimaryschool.co.uk

facebook.com/godshillprimary.co.uk/

instagram.com/godshillprimary/

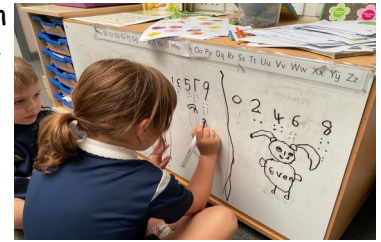


PROUD TO BE A
MUSIC MARK
SCHOOL
2024 - 2025



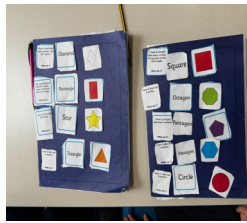
Reception & Year 1

In Forelands class this week, we have been investigating number. We have been finding doubles of numbers to 5 + 5=10 and looking at what would happen if we took 5 away. We have also been investigating odds and evens and the children have found out that evens always have a partner and odds have one left on its own. We had a pot in our garden which we wanted to investigate as it had a dahlia growing in there until the frosts came in Autumn. We gently removed the soil to discover some roots which were attached to tubers. There were even little sprouts growing from the tubers. We have divided them into 5 new plants and hope that we will soon be seeing new plants emerging.

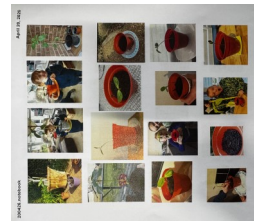


Year 1 & 2

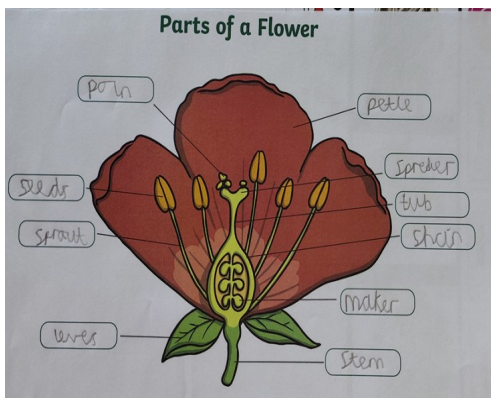
This week Year 1 and 2 have enjoyed creating their observational diary for the sunflower seeds they took home many weeks ago. We have received a large amount of photos and have subsequently created a week by week recap of how the seeds have grown as part of our Science topic. In Maths, the children have enjoyed looking at the domain of shape. We have named and described the properties of different 2-D and 3-D shapes as well as looking at how we can find fractions of these shapes by splitting them equally.



Shape	Sides	Vertices	Name of shape
Circle	0	0	Circle
Triangle	3	3	Triangle
Square	4	4	Square
Rectangle	4	4	Rectangle
Pentagon	5	5	Pentagon
Hexagon	6	6	Hexagon



Year 3



Another week seems to have flown by and the children have been working really hard. In English we have been looking at the features of persuasive writing including using rhetorical questions. In Science we have been continuing our investigations into the needs of plants and the children have set up one to see how the amount of water given affects a plants growth.

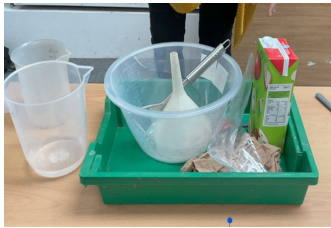




Friday 24 April 2026 Issue 27

Year 4

This week in Year 4 we observed how the human digestive system works using different pieces of equipment to create a model. Children showed their more squeamish side through their reactions to this model, but thoroughly enjoyed the activity and learnt a lot about how food is digested. Over the next few weeks we will go on to learn about teeth and how herbivores, carnivores and omnivores differ.



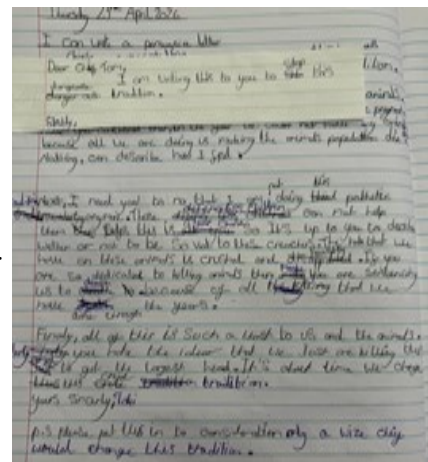
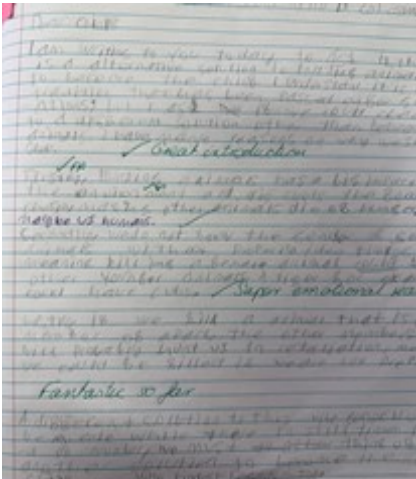
Year 5

Year 5 had a blast this week! We launched our student-built rockets into the sky to see physics in action, then headed back to the classroom to start our new book, *The Boy in the Tower*. The children have been acting like detectives, using "inference" to figure out what the characters are really like. By looking at how they act and what they don't say, we've uncovered some amazing secrets about their personalities!



Year 6

This week Year 6 have begun their Science unit on evolution—how life began and how both plants and creatures have adapted over time to their environments. In Maths, we are continuing to revise domains studied. For our writing, we are focusing on a persuasive letter.





Nut Allergies

Please can we remind you that we are a nut aware school, as we have children with serious nut allergies & ask that you do **not** send your child in with any foods containing nuts, for example—Peanut Butter, Nutella, Nutty Cereal Bars, Bakewell tart etc.

We thank you for you co-operation & support.

PE Days

Please send your child into school wearing the correct school PE kit on the following days (unless specifically mentioned otherwise):

Year R	Monday & Tuesday
Year 1 & 2	Monday & Wednesday
Year 3	Monday & Tuesday
Year 4	Monday & Tuesday
Year 5	Monday & Tuesday
Year 6	Tuesday & Wednesday

Good news from the inclusion team...

Recently the Supporting Families Team have launched a new website

IW Family Information Hub (iow.gov.uk)

This website will help keep you up to date with the information, support and advice available in your area.

There are lists of organisations, services and activities available to you, that you can access either in person or online.

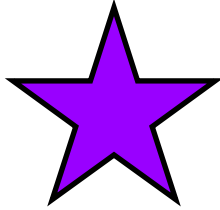
These include: **Early years and childcare**, **Support for families**, **Housing and finance**, **Learning and employment**, **Health and wellbeing**, **Young people**, **Leisure and much more...**



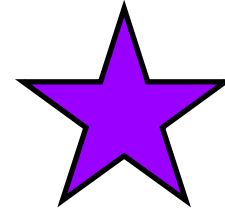


NEWSLETTER

Friday 24 April 2026 Issue 27



Year group	Attendance %
R/1	95.88
1/2	93.79
3	98.50
4	96.54
5	95.24
6	89.23
Whole school	94.60
Whole school target	96.00



Why high attendance is important for education

As a parent/carer you want the best for your children. Having a good education is an important factor in opening up more opportunities in adult life. Did you know that:

- a child who is absent a day of school per week misses an equivalent of two years of their school life
- 90% of young people with absence rates below 85% fail to achieve five or more good grades of GCSE and around one third achieve no GCSEs at all
- poor examination results limit young people's options and poor attendance suggests to colleges and employers that these students are unreliable

All absence at any stage leads to gaps in your child's learning. This in turn can:

- mean that they fall behind in work
- affect their motivation
- affect their enjoyment of learning
- lead to poor behaviour
- affect their ability to have or keep friendships.

Supporting your child's school attendance

Good school attendance habits are best started early. Children learn from those around them and you as parents/carers set the standards and expectations for your child.

For hints, tips and advice on how you can support your child with their school attendance, check out the website: www.iow.gov.uk/schoolattendance





Godshill Primary School

NEWSLETTER



Friday 24 April 2026 Issue 27



Schools Walk the Wight
with **MOUNTBATTEN**

Supported by Schools Walk the Wight headline sponsor: **ROUSE**

Registered with the Financial Conduct Authority (FR) A registered charity

Join your school team!
Compete for the Schools Walk the Wight trophy

Family-friendly
Freshwater - Alum Bay
Medal and certificate included

Raise funds to support Island families cared for by MOUNTBATTEN

FREE to sign up!

LEADERBOARD		
1st	Newchurch Primary	£1088.75
2nd	Carisbrooke CE Primary	£920.00
3rd	Lanesend Primary	£866.00
4th	Godshill Primary	£788.75
5th	Nine Acres Primary	£656.25

Sunday, 10 May 2026
Sign-up now: mountbatten.org.uk




Schools Walk the Wight
with **MOUNTBATTEN**

Supported by Schools Walk the Wight headline sponsor: **ROUSE**

Registered with the Financial Conduct Authority (FR) A registered charity

Join your school team!
Compete for the Schools Walk the Wight trophy!

Family-friendly
Freshwater - Alum Bay
Medal and certificate included

Raise funds to support Island families cared for by MOUNTBATTEN

FREE to sign up!

Sunday, 10 May 2026
Sign-up now: mountbatten.org.uk




Telephone: 01983 840246 Email: office@godshillprimary.co.uk Website: www.godshillprimaryschool.co.uk

facebook.com/godshillprimary.co.uk/

instagram.com/godshillprimary/





Godshill Primary School

NEWSLETTER



Friday 24 April 2026 Issue 27



Established in 1972, Ventnor Youth, situated at Watcombe Bottom, has been providing the opportunity to play football to the town of Ventnor for decades.

We are very proud to still be going strong after all these years and, in more recent history, to have added a thriving girls' section to the club as well.

As the season draws to a close, our Ventnor Vikings 2026/2027 U12s are holding open training sessions. We are trying to encourage more talented young footballers, both girls and boys, to come.

Become and enjoy being part of a team

Learn football skills

Enjoy time with your team mates

Fitness

Take part in local football leagues

Take part in local beach soccer



Contact the Ventnor Vikings for more information.

<https://ventnoryouthfc.uk/teams/>



Telephone: 01983 840246 Email: office@godshillprimary.co.uk Website: www.godshillprimaryschool.co.uk

facebook.com/godshillprimary.co.uk/

instagram.com/godshillprimary/

